

Adams Rite 8675 CVR Midpanel Exit Device

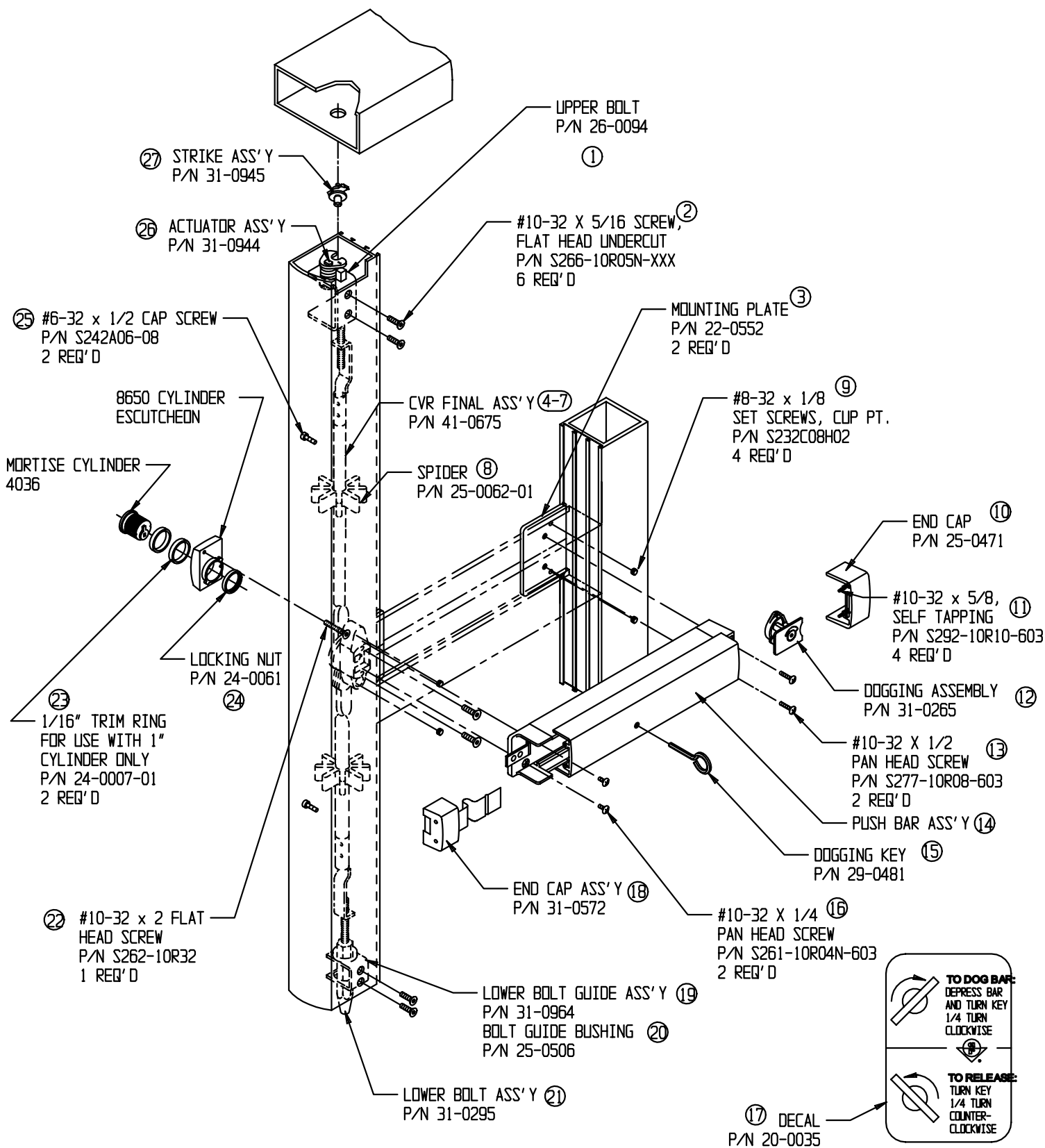
May-04

Retail Parts Price List

Item	Description	Part Number	Units Packaged	List Price
1	Upper Bolt	26-0094	Each	\$5.40
2	#10-32X5/16 Flat Head Screw	S266-10R05N-XXX-MP *	Pkg. of 10	\$4.00
3	Mounting Plate	22-0552	Each	\$3.40
4	CVR Final Ass'y. (Complete With Bolts)	41-0675	Each	\$100.00
5	Link-Crank Ass'y.	31-0675	Each	\$5.38
6	Retaining Ring (Link-Crank)	R603-31-MP	Pkg. of 10	\$9.00
7	#10-32X1/4 Pan Head SEM Screw (Link)	S277-10R04-603-MP	Pkg. of 10	\$4.00
8	Spider	25-0062-01-MP	Pkg. of 10	\$13.00
9	#8-32X1/8 Cup Point Set Screw	S232C08H02-MP	Pkg. of 10	\$4.00
10	End Cap (Hinge)	25-0471-IP	Each	\$4.00
11	#10-32X5/8 Self Tapping Screw	S292-10R10-603-MP	Pkg. of 10	\$4.00
12	Dogging Ass'y. (Complete)	31-0265-IP	Each	\$12.00
13	#10-32X1/2 Pan Head SEM Screw	S277-10R08-603-MP	Pkg. of 10	\$4.00
14	Push Bar Ass'y.: Order By Exit Device Series	313,628,335	Each	\$82.00
	(8675), Door Opening Width and Finish.	606,612,613,630	Each	\$240.00
		605,611,629	Each	\$270.00
15	Dogging Key	29-0481-MP	Pkg. of 10	\$20.00
16	#10-32X1/4 Pan Head Screw	S261-10R04N-603P	Pkg. of 10	\$4.00
17	Decal (Dogging Instructions)	20-0035	Each	\$9.00
18	End Cap Ass'y. (Nose Complete)	31-0572	Each	\$8.50
19	Lower Bolt Guide Ass'y.	31-0964	Each	\$3.00
20	Bolt Guide Bushing	25-0506-MP	Pkg. of 10	\$4.00
21	Lower Bolt Ass'y.	31-0295	Each	\$9.00
22	#10-32X2 Flat Head Screw	S262-10R32-MP	Pkg. of 10	\$4.00
23	1/16" Trim Ring (For 1" Cylinder - 2 Req'd)	24-0007-01	Each	\$8.00
24	Locking Nut	24-0061	Each	\$4.60
25	#6-32X1/2 Cap Screw (Rod Piercing)	S242A06-08-MP	Pkg. of 10	\$6.00
26	Actuator Ass'y. (Top)	31-0944	Each	\$17.00
27	Strike Plate Ass'y	31-0945	Each	\$12.00
28	Installation Sheet, 8675 (Device)	80-0180-137	Each	\$1.50
29	Installation Sheet, 8675 (Strike)	80-0180-134	Each	\$1.50

Note: Consult Factory For Doors Over 66 Inches Above Pushbar.

* Specify Finish



MOUNTING BAR FINAL ASS'Y: NOT AVAILABLE

50-8675 © 02/04



ADAMS RITE MANUFACTURING COMPANY
260 SANTA FE ST.
POMONA, CA 91767
OFFICE: (909) 632-2300 FAX: (909) 632-2369

8675 MIDPANEL